



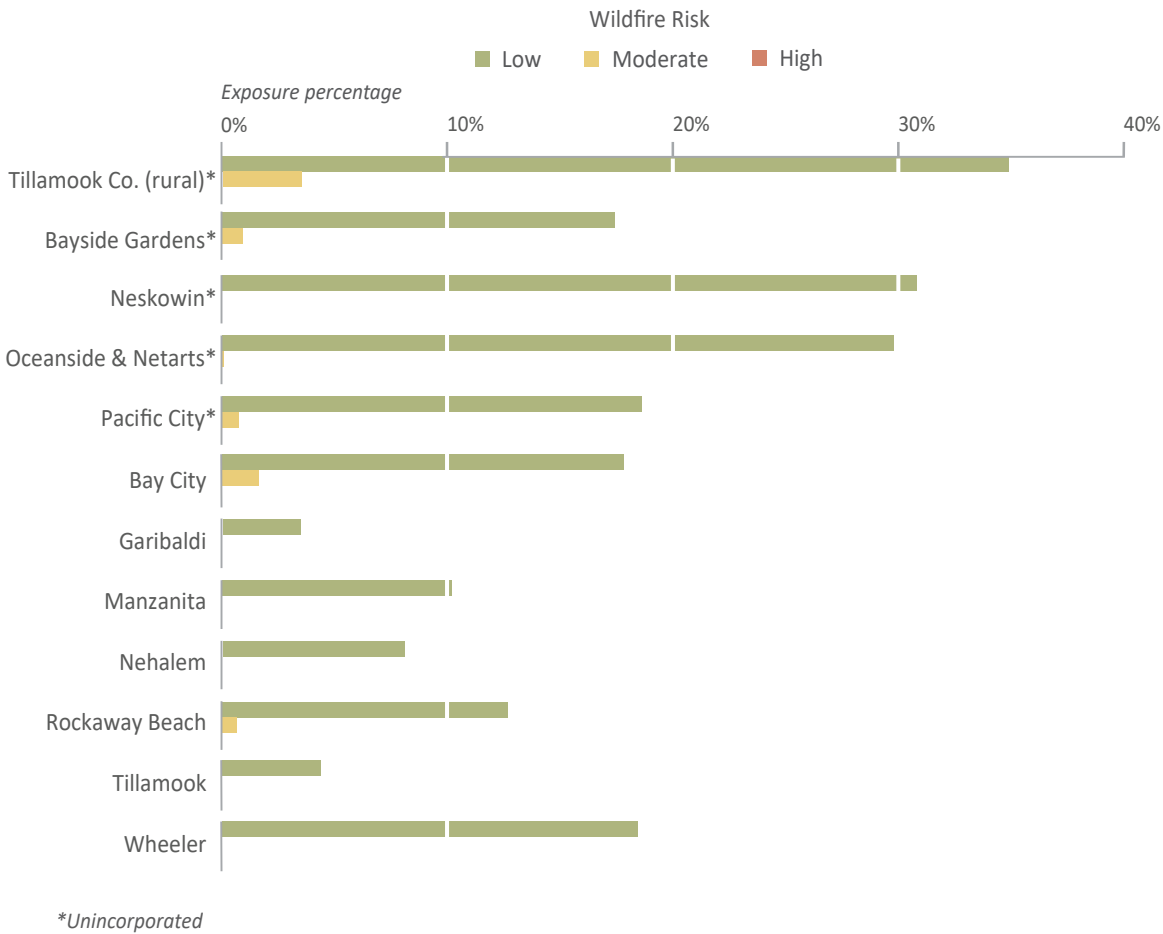
STATE OF OREGON  
DEPARTMENT OF GEOLOGY AND  
MINERAL INDUSTRIES  
RUARRI J. DAY-STIRRAT, STATE GEOLOGIST  
www.oregongeology.org

# Wildfire Risk Map of Tillamook County, Oregon



Study Location Map

Percent of Total Building Value Exposed to Wildfire



## Wildfire Risk

- Low
- Moderate
- High

Wildfire Risk is categorized as Low, Moderate, and High and indicates the level of risk a location has to wildfire hazard. The Wildfire Risk data layer is derived from a combination of the burn probability (fire history and behavior) and conditional flame length data.

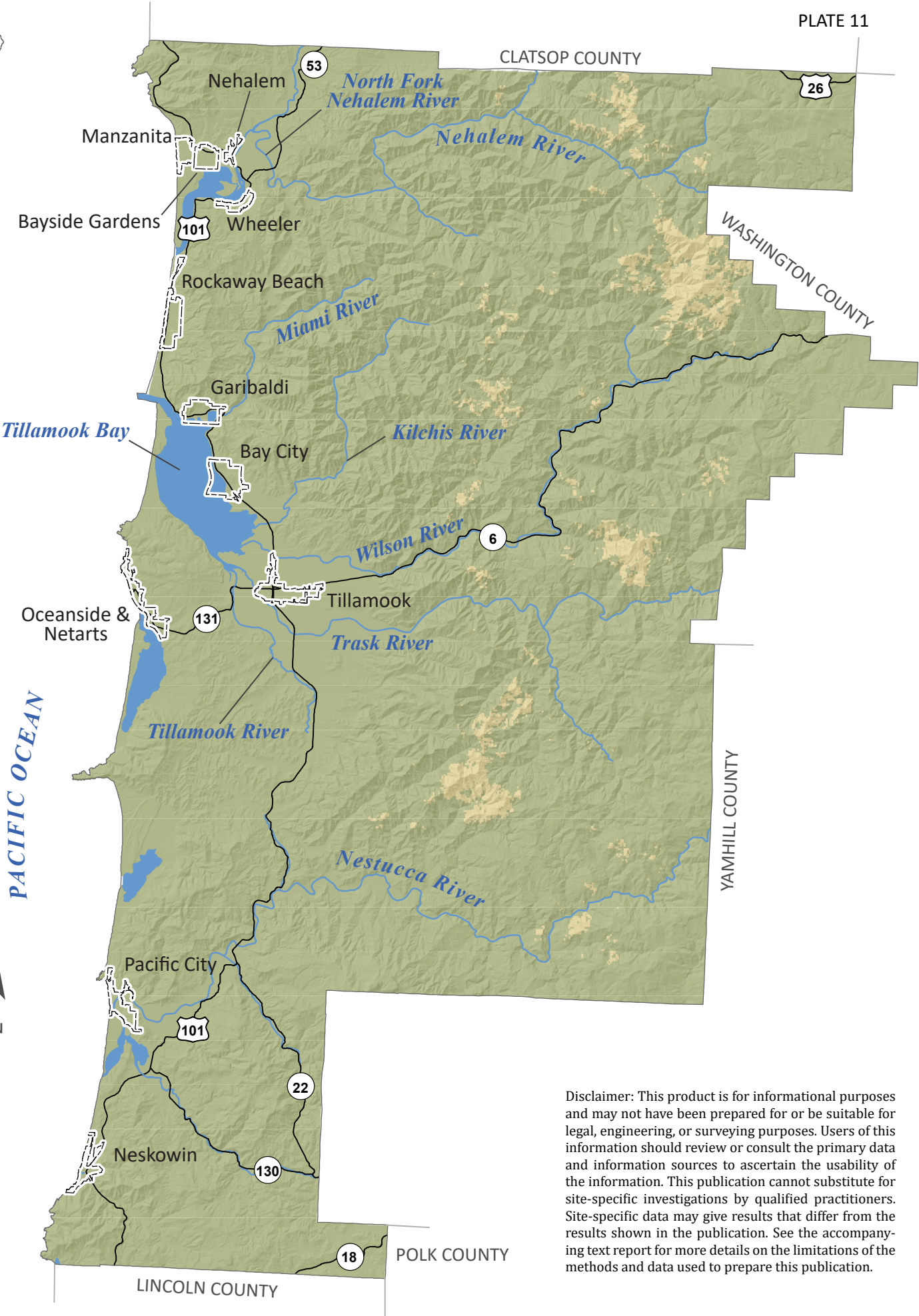


PLATE 11

**Data Sources:**  
Wildfire risk data: Oregon Department of Forestry, Pyrologix, LCC. (2018)  
Roads: Oregon Department of Transportation Signed Routes (2013)  
Place names: U.S. Geological Survey Geographic Names Information System (2015)  
City limits: Oregon Department of Transportation (2014)  
Basemap: Oregon Lidar Consortium (2014)  
Hydrography: U.S. Geological Survey National Hydrography Dataset (2017)  
  
Projection: NAD 1983 UTM Zone 10N  
Software: Esri® ArcMap 10, Adobe® Illustrator CC  
Cartography by: Matt C. Williams, 2022

This map is an overview map and not intended to provide details at the community scale. The GIS data that are published with the Tillamook County Multi-Hazard Risk Assessment can be used to inform regarding queries at the community scale.

Disclaimer: This product is for informational purposes and may not have been prepared for or be suitable for legal, engineering, or surveying purposes. Users of this information should review or consult the primary data and information sources to ascertain the usability of the information. This publication cannot substitute for site-specific investigations by qualified practitioners. Site-specific data may give results that differ from the results shown in the publication. See the accompanying text report for more details on the limitations of the methods and data used to prepare this publication.